

# Industrial Valve Fluid Control

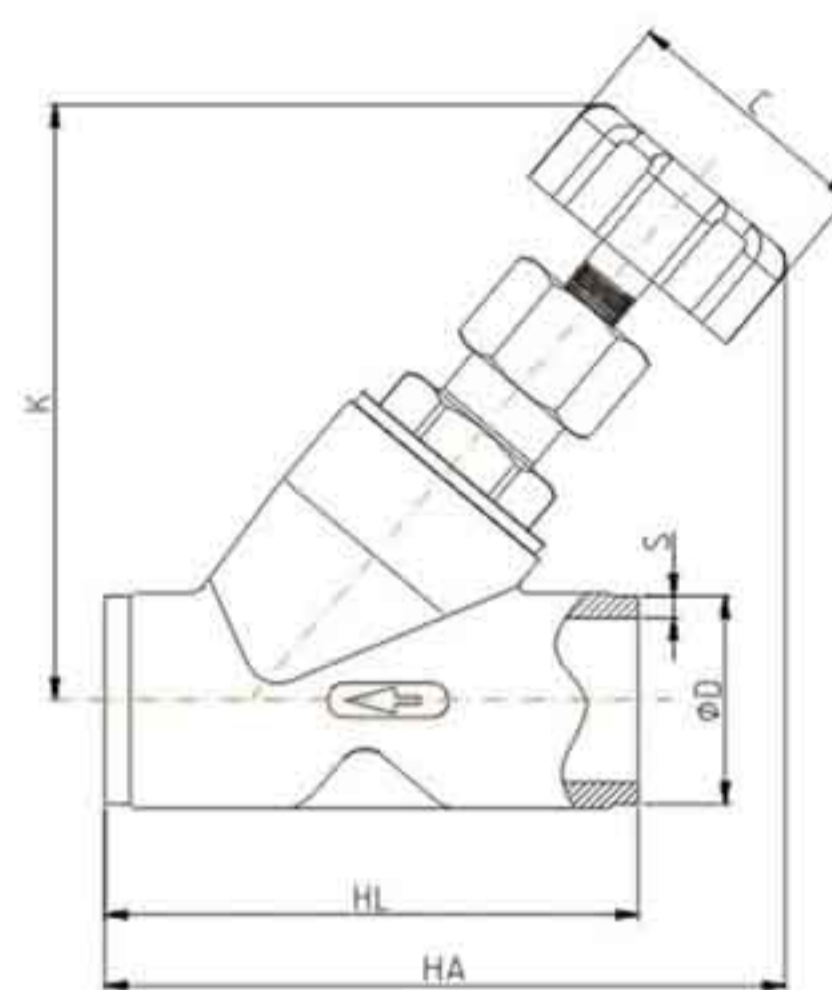
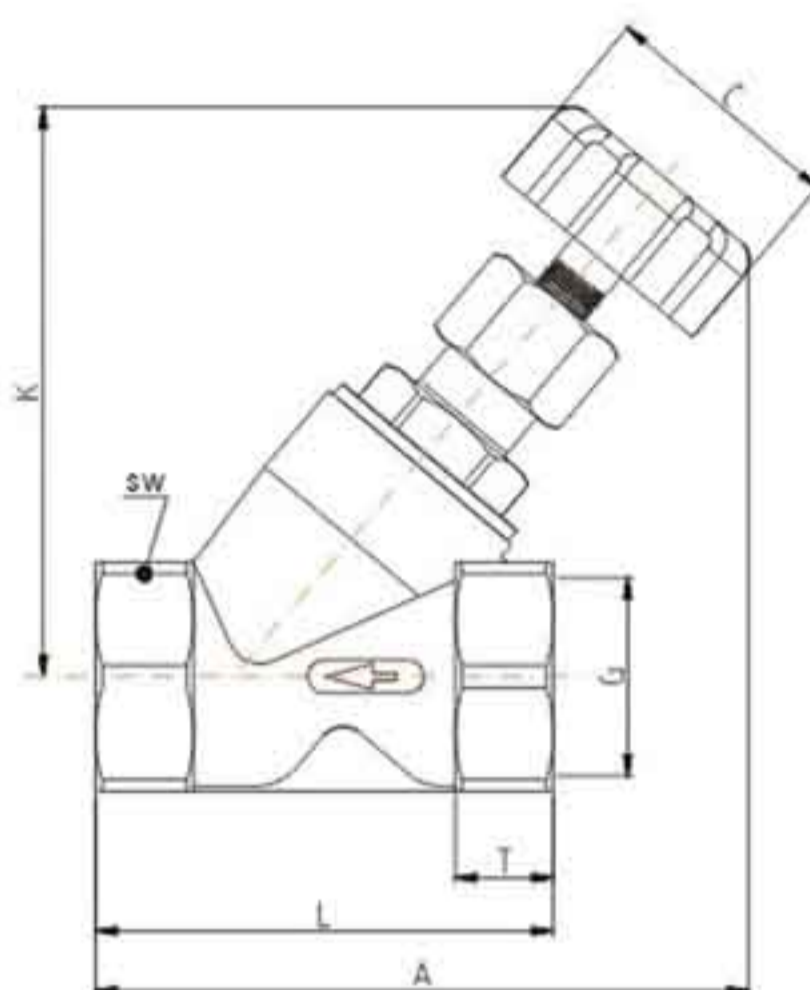
Mechanical and Fluid Control System



[www.j-mcsys.com](http://www.j-mcsys.com)

# **McSYS<sup>®</sup>**





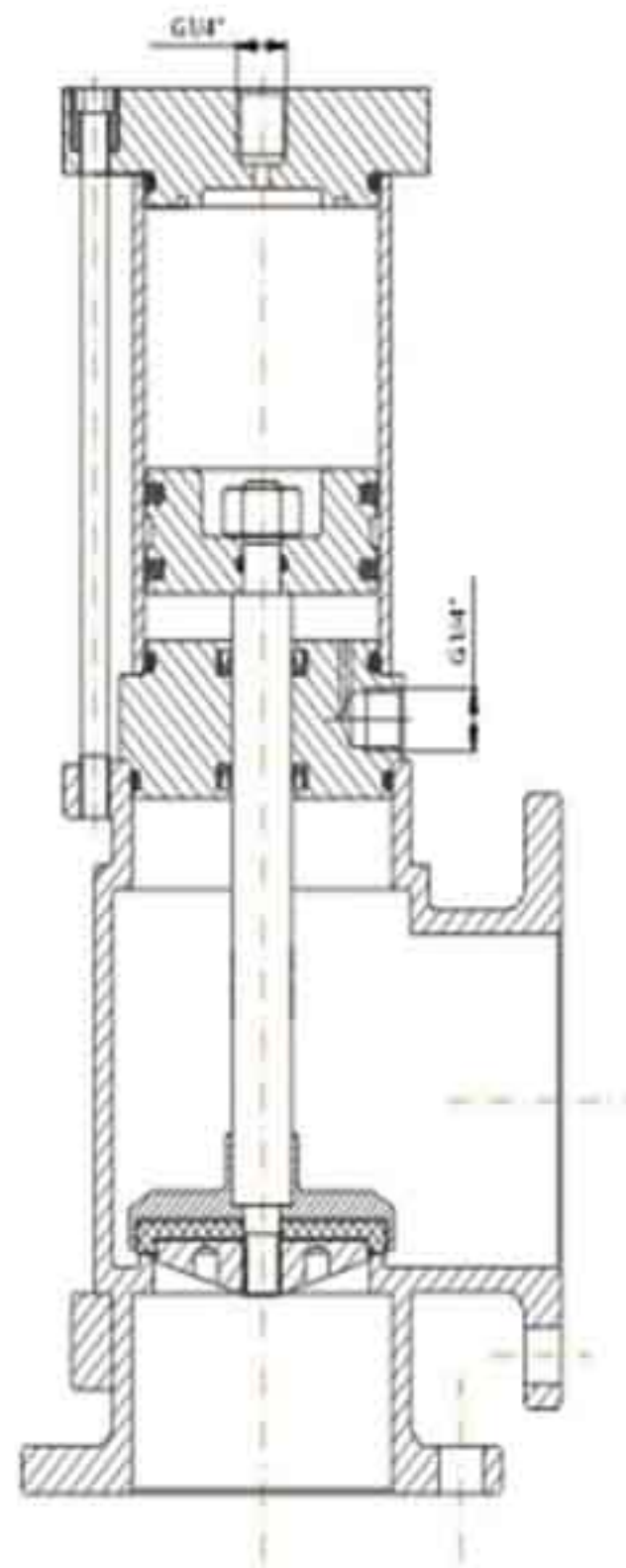
**Technical Data**

<b>Pipe Pressure</b>	<b>0-1.6Mpa</b>
Body Material	CF8M(AISI 316) CF8(AISI 304)
Valve Spool Seal	PTFE
Valve Size	DN10-DN80
Applicable Medium	Water, Alcohol, Oil, Fuel, Steam, Naturalgas of Liquid, Organic solvent, Acid andlye
The Temperature of The Medium	-10+200°C
Most Media Visco sity	600mm <sup>2</sup> /s
Connection Form	Threaded(BSPT,NPT),Welded,Flanged,Tri-clamp

**Note:** Adjustable seat is also available

**Dimensions**

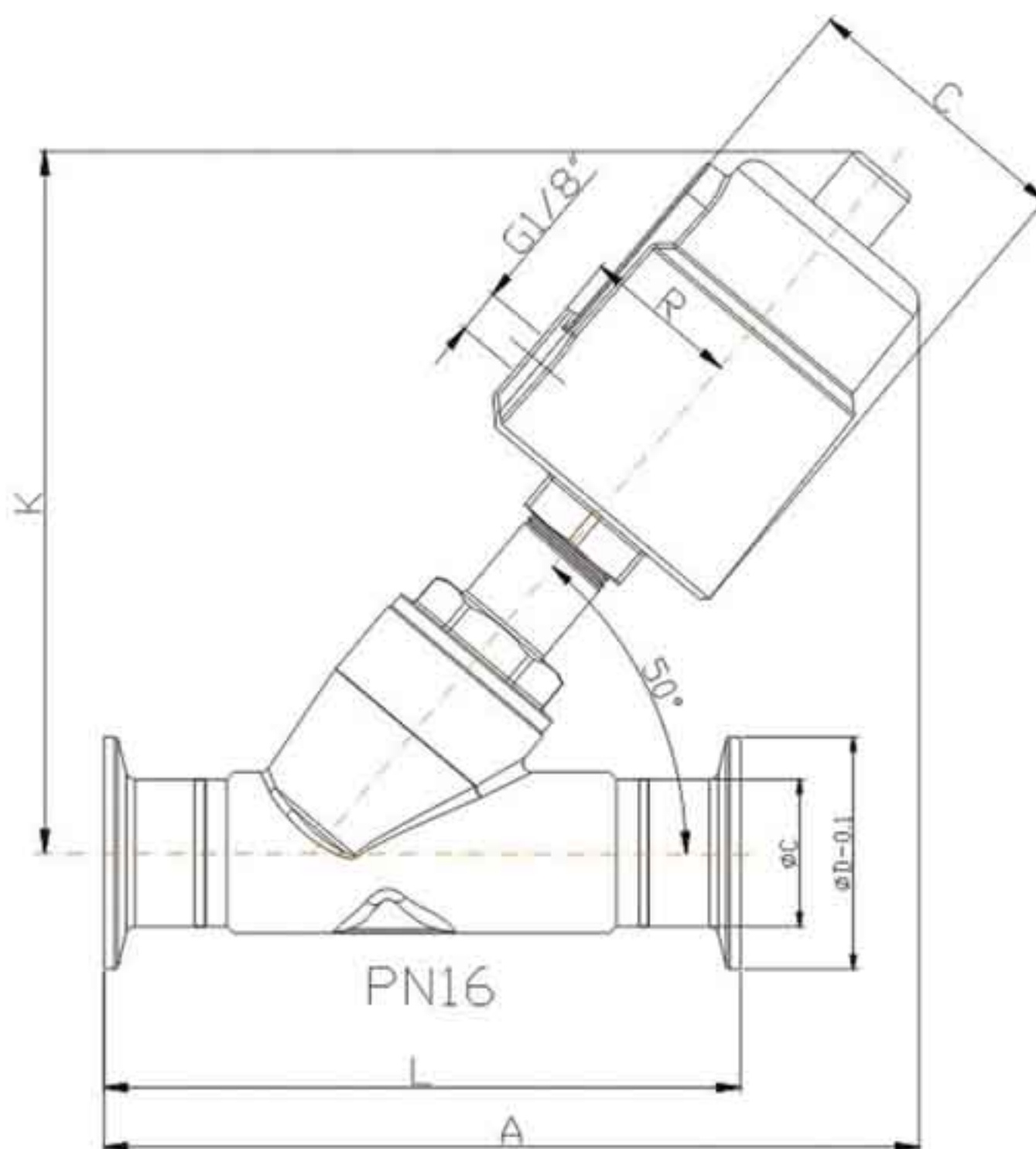
size	C	K	threaded					Welding type										
			G	T	A	L	SW	DIN11850-2				DIN11850-3				SMS3008		
								HA	HL	D	S	D	S	HA	HL	D	S	
DN10	65	107	3/8"	12	120	68	27	-	-	-	-	-	-	-	-	-	-	-
DN15	65	107	1/2"	15	120	68	27	166	70	19	1.5	20	2	126	75	18	1	
DN20	65	110	3/4"	16	124	75	32	123	82	23	1.5	24	22	135	95	25	1.2	
DN25	65	124	1"	17	137	90	40	142	100	29	1.5	30	2	155	130	32	1.2	
DN32	65	144	1 1/4"	21	162	116	50	160	125	35	1.5	36	2	175	145	33.7	1.2	
DN40	65	144	1 1/2"	21	162	116	56	164	130	41	1.5	42	2	185	160	38	1.2	
DN50	65	150	2"	22	175	138	69	177	155	53	1.5	54	2	195	175	51	1.2	
DN65	92	196	2 1/2"	26	230	178	85	-	-	-	-	-	-	-	-	-	-	



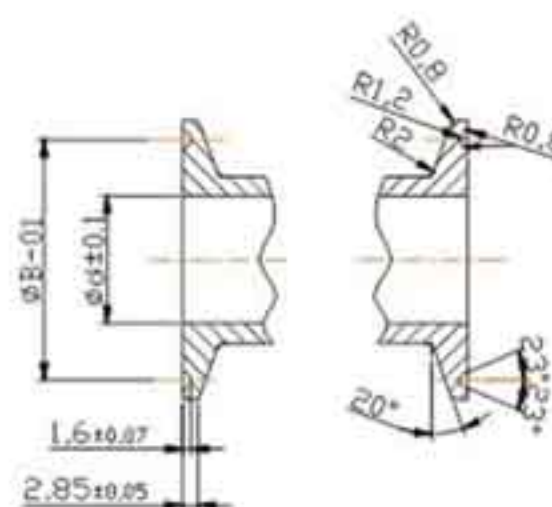
Technical Data

Size	DN50, DN65, DN80
Pipe Pressure	0-1.6MPa
Control The Pressure	0.3-0.8MPa
Control Medium	Naturalgas, Air
Body Material	CF8
Sealing Material	EPDM/FPM/PTFE
Applicable Medium	Water, Gas, Pulp etc liquid
Cylinder Size	63mm, 80mm
FluidTemperature	-10-+120°C
Ambient Temperature	-10-+80°C
Connection Form	Threaded, Flanged
Control Forms	Double acting





Clamp Specification: ISO2852-1993, According to customer's requirements



**Dimension**

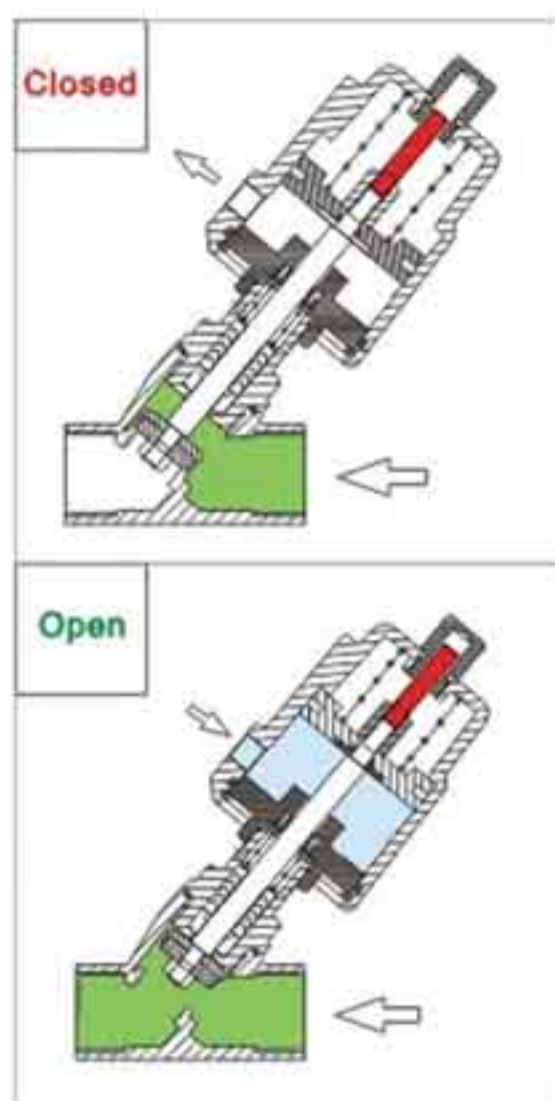
size	actuator (mm)	$\phi D$	$\phi B$	$\phi C$	$\phi d$	L	A	K
ND15	50	34	27,5	19	12	98	142	124
DN20	50	34	27,5	24	17	114	152	128
DN25	50	50,5	43,5	30	23	140	172	136
DN32	63	50,5	43,5	37	30	165	206	174
DN40	63	64	56,5	42	35	170	210	175
DN50	63	64	56,5	54	47	195	225	183





**Single Acting, Normally Closed(NC)–Enter Above Seat**

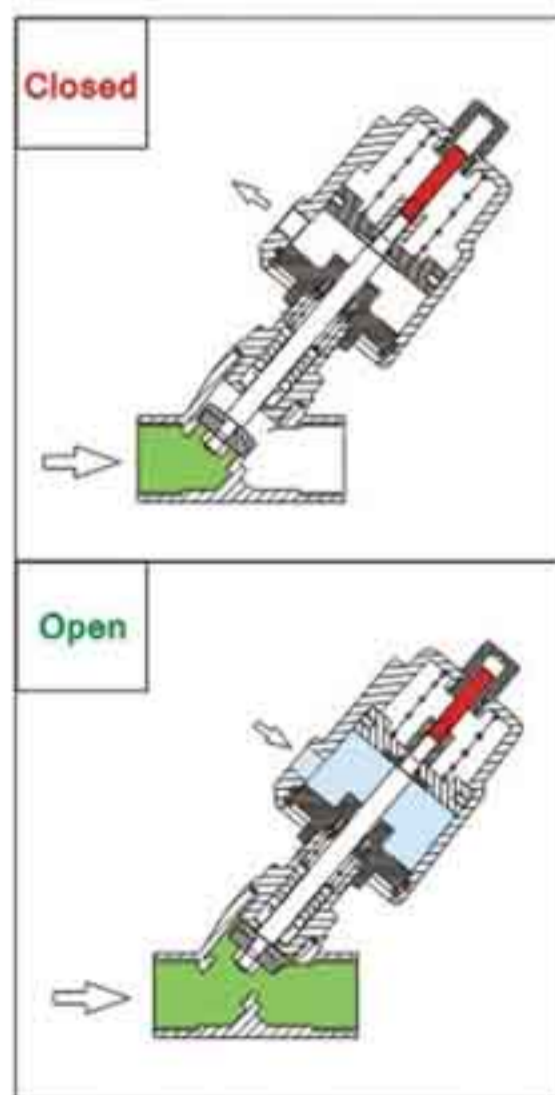
suitable for condensable media, such as air, steam and low pressure liquid media



size	Thread end	Orifice(mm)	Kv(m <sup>3</sup> /h)	Actuator(mm)	ΔP(MPa)	Control pressure(MPa)
DN10	G3/8"	13	3,8	40	0–1,6	1,3–0,45
				50	0–1,6	0,3–0,35
DN15	G1/2"	13	4,7	40	0–1,6	0,3–0,45
				50	0–1,6	0,3*0,35
DN20	G3/4"	18	9,5	50	0–1,6	0,3–0,4
DN25	G1"	24	18,1	50	0–1,6	0,3–0,45
				63	0–1,6	0,3–0,35
DN32	G1 1/4"	31	23,1	63	0–1,6	0,3–0,55
				90	0–1,6	0,25–0,35
DN40	G1 1/2"	35	32,9	63	0–1,6	0,3–0,65
				90	0–1,6	0,25–0,4
DN50	G2"	45	52,8	63	0–1,2	0,3–0,7
				90	0–1,6	0,25–0,45
DN65	G2 1/2"	61	82,6	90	0–1,0	0,25–0,6
				125	0–1,6	0,3–0,4
DN80	G3	80	127	125	0–1,6	0,3–0,7

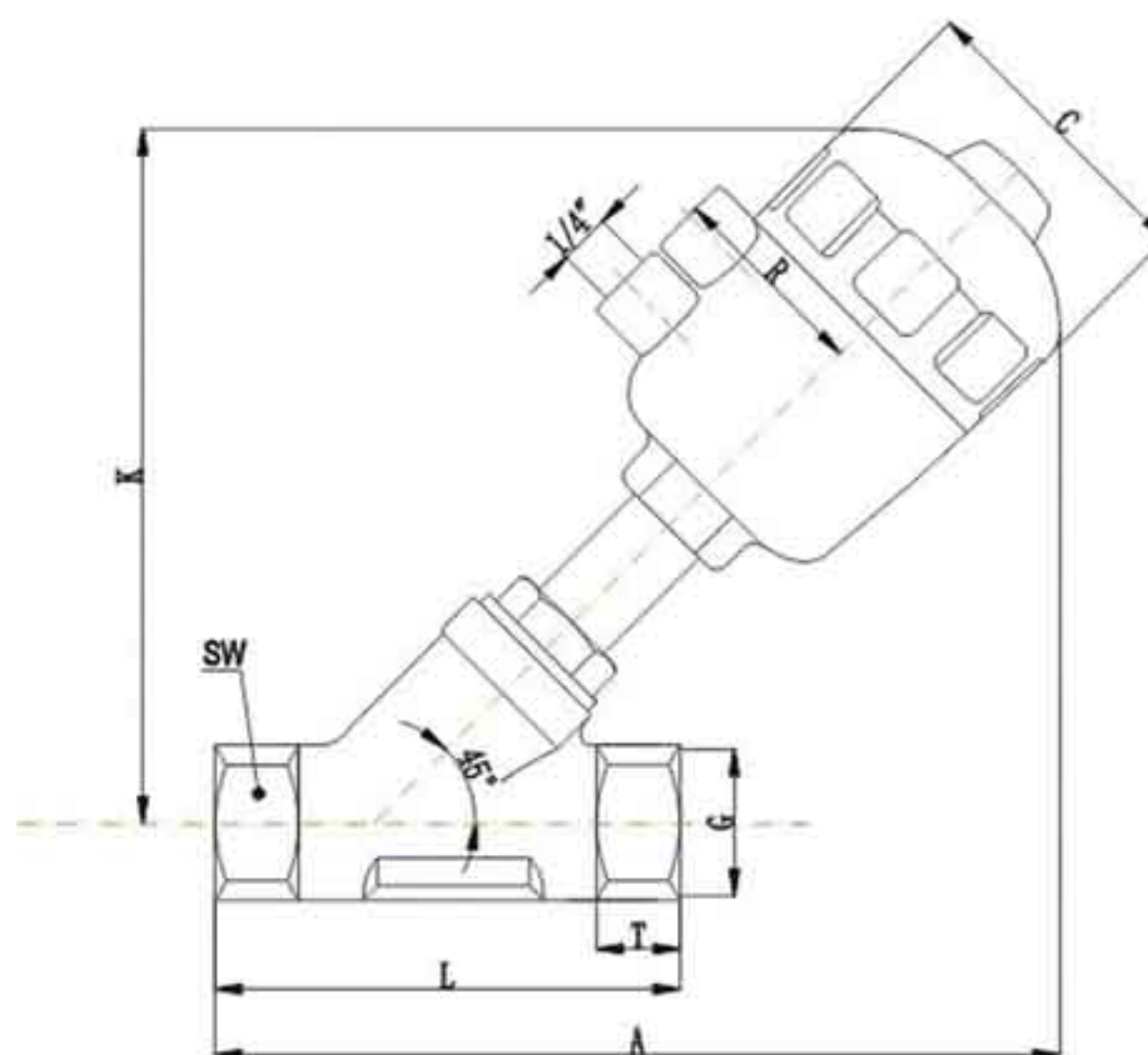
**Single Acting, Normally Closed(NC)–Enter Below Seat(No Water–hammer)**

Flow come from below seat, avoid water hammer



size	Thread end	Orifice(mm)	Kv(m <sup>3</sup> /h)	Actuator(mm)	ΔP(MPa)	Control pressure(MPa)
DN10	G3/8"	13	3,8	40	0–1,1	0,3
				50	0–1,4	0,3
DN15	G1/2"	13	4,7	40	0–1,1	0,3
				50	0–1,4	0,3
DN20	G3/4"	18	9,5	50	0–1,1	0,3
DN25	G1"	24	18,1	50	0–1,4	0,3
				63	0–1,4	0,45
				90	0–1,6	0,5
DN32	G1 1/4"	31	23,1	63	0–0,6	0,45
				90	0–1,6	0,5
DN40	G1 1/2"	35	32,9	63	0–0,5	0,45
				90	0–1,6	0,5
DN50	G2"	45	52,8	90	0–1,0	0,5
DN65	G2 1/2"	61	82,6	90	0–0,7	0,5
				125	0–0,7	0,6
DN80	G3"	80	127	125	0–0,6	0,6





### Technical Data

<b>Fluid pressure</b>	<b>Max1,6MPa(232psi)</b>
Control Pressure	0,3–0,8mpa(43,5–116psi)
Control Fluid	Naturalgas, Air
Body Material	CF8M/CF8
Seals Material	PTFE
Actuator Material	PA or pps
Actuator Size	40mm,50mm,63mm,90mm,125mm
Applicable Fluid	Water,Alcohol,Oil,Fuel,Steam,Natural gas or liquid,Organic solvent,Acid and lye
Fluid Viscosity	Max 600mm <sup>2</sup> /s
Fluid Temperature	–10°C— +200°C
Ambient Temperature	–10°C— +80°C
Control Type	Normally closed,Normally open,Double acting
Connection	Threaded(BSPT,NPT)

### Dimensions

size	Actuator	G	C	R	A	K	L	T	S
DN15	50	1/2"	64	45	168	142	75	20	28
DN20	50	3/4"	64	45	180	148	90	16	32
DN25	50	1"	64	45	190	156	102	18	39
	63	1"	80	52	219	184	102	18	39
DN32	63	1 1/4"	80	52	224	189	113	22	48
DN40	63	1 1/2"	80	52	233	193	127	22	54
	80	1 1/2"	100	62	252	213	127	22	54
DN50	63	2"	80	52	252	207	140	28	67
	80	2"	100	62	270	227	140	28	67
DN65	80	2 1/2"	100	62	277	235	153	28	82





**Function Principle**

Positioner could get 4-20mA electrical signal from controller of control system, through converter to changing into air signal to control valve open and close. Under the help of adjustable seat to make accurate regulation.

**Feature**

Convenient adjustment, simple operation; Strong vibration resistance, stable operation; The unique design, build the regulating valve cone and shut, Such proportion of linear flow or relations, so as to achieve the change, Precise fast circuit-adjusting function.

**Technical Data**

Size	DN10~DN65
Actuator	Φ50、Φ63、Φ90
Control Power	4-20mA
Compressed Air	0.3~0.8MPa
Connection	Threaded,Welded,Flanged,Tri-clamp
Positioner	Positioner mechanical and intelligent



**Function**

Motor control actuator works depending on 4-20mA or 0-10VDC electrical signal to control valves open or close. Under the help of adjustable seat, motor control valve could make accurate regulation and also could make manual control.

**Feature**

Convenient adjustment, simple operation, Strong vibration resistance, steady operation, easy flow of the realization of the valve Really control.

**Technical Data**

Size	DN10~DN65
Voltage	220V AC
Control Power	4-20mA 0-10V DC
Connection	Threaded,Welded,Flanged,Tri-clamp
Actuator	Motor control actuator

# **McSYS**®

**Korea** Shi wha industrial 1364(30-102),  
Gyeonggi-do, Korea  
Tel: +82-31-430-3772  
Fax: +82-31-430-3774

**U.S.A** Sanfrancisco USA  
Tel: +1-408-316-8717  
Fax: +1-717-326-8717

**China** Yantai china ( **SWC** Valve)  
Tel: +86-535-683-3973  
Fax: +86-535-683-1293